



# HEALTHCARE CHATBOT

## THE INTELLIGENT AI HEALTHCARE AGENT

According to a recent survey by the Journal of Medical Internet Research, 78% of physicians believe that chatbots are the most efficient way of scheduling doctor appointments, 76% believe they're useful for locating health clinics, and 71% support them for providing medication information.

**BOTTER** is designed to automate patient requests & optimize their journey by leveraging the powerful BOTTER NLP engine.

What makes **BOTTER** unique is that it's a strong solution designed to build a more accurate chatbot with a customer-centric UX design.

### OUR CLIENTS



KKESH KSA



Mouwasat Hospital KSA



AIMokhtabar



AlBorg



AlBorg Scan

### EMAIL US TODAY

See what **BOTTER** can do for your organization.

[hello@botter.ai](mailto:hello@botter.ai)

# STREAMLINE YOUR PATIENTS' ENGAGEMENT'S



## EVOLVING AI

Powerful NLP engines to match your deployment requirements backed up by MS Azure & Rasa.



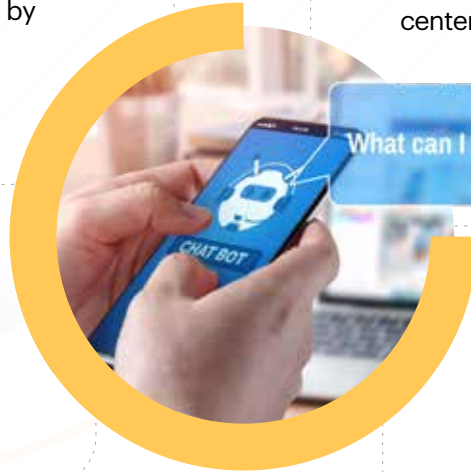
## CONNECTORS

Can be easily integrated with any contact center, such as Cisco, Genesys, Zendesk, etc.



## MULTILINGUAL

Leverage the power of our NLP technology to deliver automated chat in any language.



## VOICE TECHNOLOGY

Convert spoken audio into text, use voice techs for verification, & add speaker recognition to your application.



## SEAMLESS INTEGRATION

Ultimate automation & conversational experience through channels & APIs suite.



## FLOW BUILDER

Lego like powerful & easy-to-use tool that helps you build & manage your chatbot flows in a simple way via the building blocks concept.

## HOW BOTTER CAN HELP YOU

- **Appointments Management** - Provide a health-care agent experience by helping your patients to book, reschedule, and cancel visits in a matter of minutes.
- **Medication Assistance** - Help your patients find the nearest pharmacy which has the medicines in stock, and help tracking their medication schedule.
- **Patients FAQs** - Answer your patients frequent questions and provide them all the medical assistance they need.
- **Patients Feedback** - Collect your patients feedback across their journey and effectively optimize both your workflow and your patient's experience.
- **Create Your Own** - **BOTTER** enables your organization to add new services in a matter of seconds.